




# Residence 501

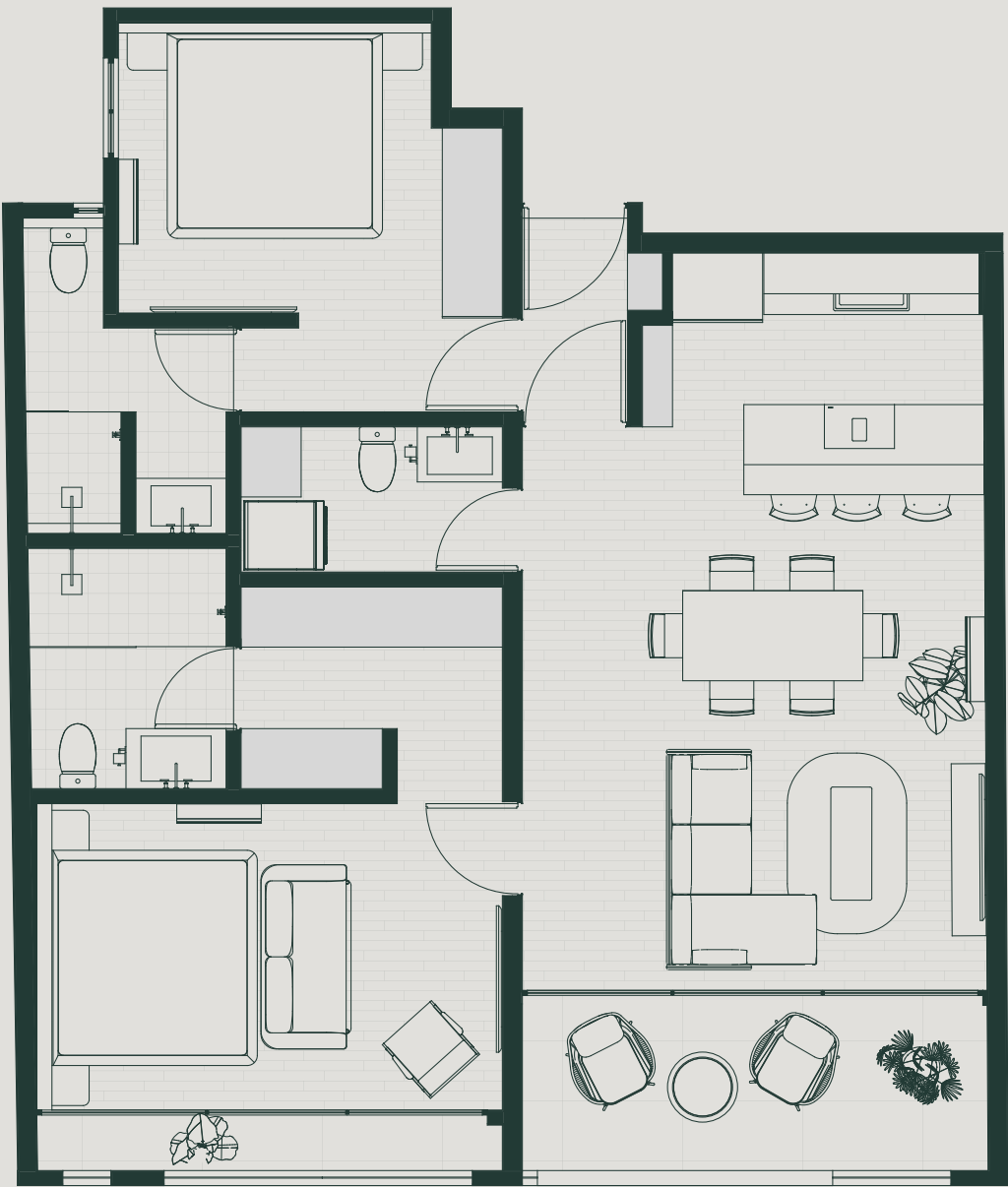
## 2 Bed 3.5 Bath Lockoff

	Level	5
	View	Street
	Internal	92.33m2 / 994sqf
	External	12.32m2 / 132sqf
	Total	104.65m2 / 1126sqf

- Spacious and cozy two-bedroom apartment.
- Open-plan kitchen and living room.
- Large balcony.
- Master bedroom with walk-in closet and private bathroom.
- Guest lockoff bedroom with ample closet space and private bathroom.
- Extra half-bathroom with laundry area.
- Small storage closet.
- SMEG & SAMSUNG appliances.

Please note that this floor plan is a guide only and was prepared prior to completion of the development. The information contained in this floor plan is believed to be correct at the time of preparation but is not guaranteed. Changes may be made during developmet and the floor plan is subject to change without notice at any time in accordance with the provisions of the Contract.

Ki Residences, Playa del Carmen .....







Lounge area



Kitchen area



Bedroom



Balcony



Bedroom





Kitchen area



Balcony



Bedroom



Kitchen area



Bedroom



Kitchen area





Open plan kitchen and lounge area



Bedroom