



# Residence 301

## 1 Bed 1.5 Bath

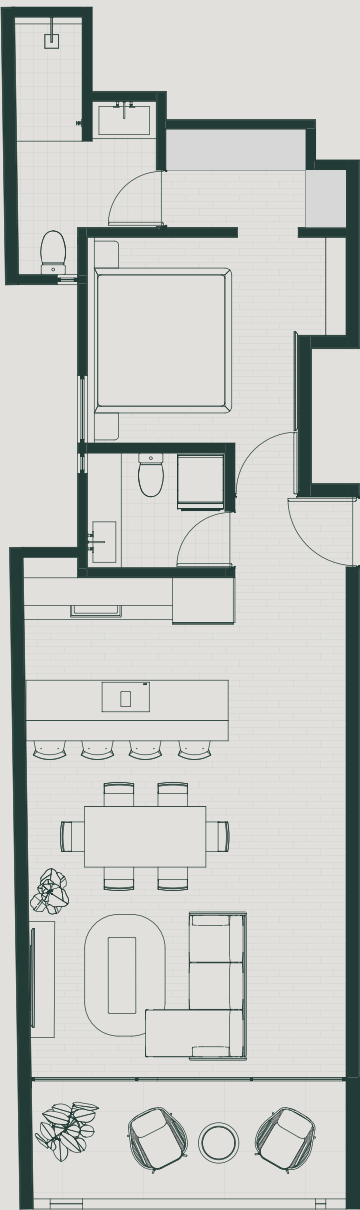


Level	3
View	Street
Internal	69.69m2 / 750sqf
External	9.07m2 / 97sqf
Total	78.76m2 / 847sqf

- Elegant and spacious one-bedroom apartment.
- Large open-plan kitchen and living room.
- Spacious balcony.
- Master bedroom with a large walk-in closet and private bathroom.
- Space for a work desk.
- Guest half bathroom with laundry area.
- SMEG & SAMSUNG appliances.

Please note that this floor plan is a guide only and was prepared prior to completion of the development. The information contained in this floor plan is believed to be correct at the time of preparation but is not guaranteed. Changes may be made during developmet and the floor plan is subject to change without notice at any time in accordance with the provisions of the Contract.

Ki Residences, Playa del Carmen .....







Lounge area



Kitchen area



Lounge area



Lounge area



Lounge area





Bedroom



Balcony





Kitchen area



Bedroom



Kitchen area



Lounge area





Open plan kitchen and lounge area



Bedroom