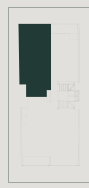




Residence 204

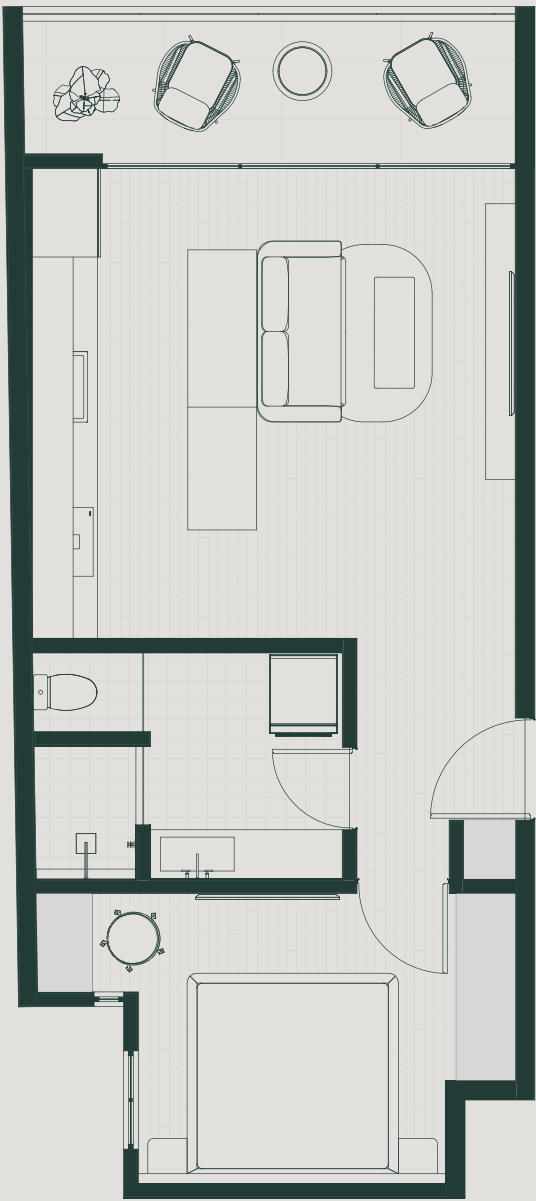
1 Bed 1 Bath

	Level	2
	View	Garden
	Internal	52.81m2 / 568sqf
	External	8.13m2 / 87sqf
	Total	60.94m2 / 655sqf

- Spacious and comfortable one-bedroom apartment.
- Open-plan kitchen and living room.
- Large balcony for outdoor dining and relaxation.
- Master bedroom with a large closet.
- Space for a work desk or another closet
- Functional bathroom with laundry area.
- Storage closet.
- SMEG & SAMSUNG appliances.

Please note that this floor plan is a guide only and was prepared prior to completion of the development. The information contained in this floor plan is believed to be correct at the time of preparation but is not guaranteed. Changes may be made during developmet and the floor plan is subject to change without notice at any time in accordance with the provisions of the Contract.

Ki Residences, Playa del Carmen





Kitchen area



Kitchen and lounge area



Bedroom



Balcony



Lounge area



Kitchen and lounge area



Bedroom



Bedroom



Balcony



Living area



Open plan kitchen and lounge area



Kitchen and lounge area