






# Residence 102

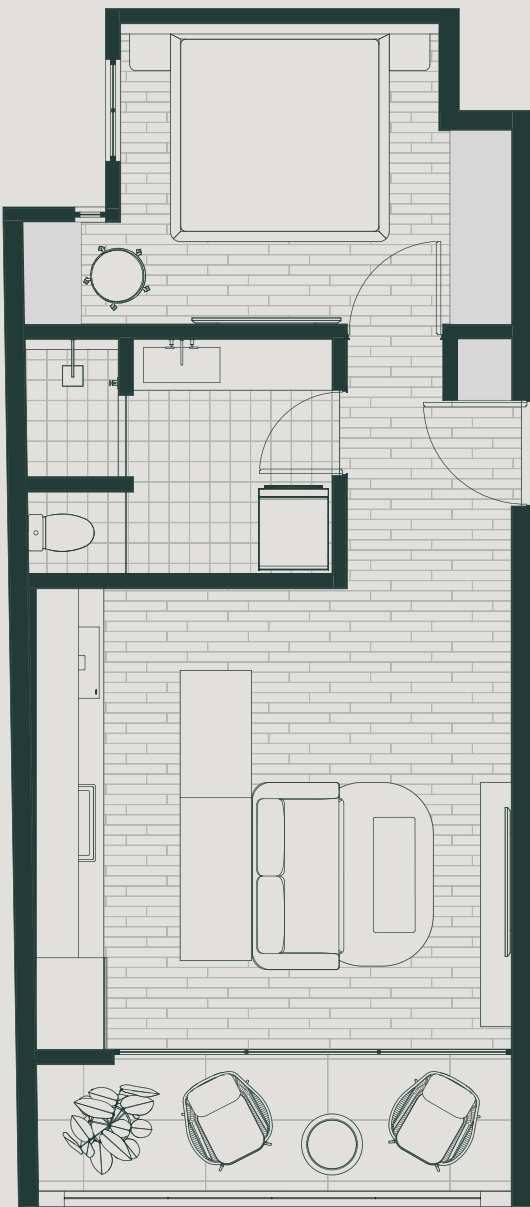
## 1 Bed 1 Bath

	Level	1
	View	Street
	Internal	49.84m2 / 537sqf
	External	7.06m2 / 75sqf
	Total	56.90m2 / 612sqf

- Spacious and comfortable one-bedroom apartment.
- Open-plan kitchen and living room.
- Large balcony for outdoor dining and relaxation.
- Master bedroom with a large closet.
- Space for a work desk or another closet
- Functional bathroom with laundry area.
- Storage closet.
- SMEG & SAMSUNG appliances.

Please note that this floor plan is a guide only and was prepared prior to completion of the development. The information contained in this floor plan is believed to be correct at the time of preparation but is not guaranteed. Changes may be made during developmet and the floor plan is subject to change without notice at any time in accordance with the provisions of the Contract.

Ki Residences, Playa del Carmen .....





Bedroom



Open plan kitchen and lounge area





Kitchen area



Balcony



Lounge area



Bedroom



Living area





Kitchen and lounge area



Balcony



Kitchen and lounge area



Kitchen area



Bedroom